



UAE

Purti Gala

10-10-40+TE

High Potassium Soluble Fertilizer



Introduction :-

A highly soluble fertilizer in the proportion of potassium, 40% of potassium nitrate, monopotassium phosphate and potassium sulfate, in addition to the elements nitrogen, phosphorus and micronutrients. It is produced from the purest types of raw materials. It is a fine and homogeneous crystalline powder that is completely soluble in water and fast absorption. It is used in various fertilization programs with irrigation water and with Foliar spray

Symptoms of potassium deficiency in different crops



Potato



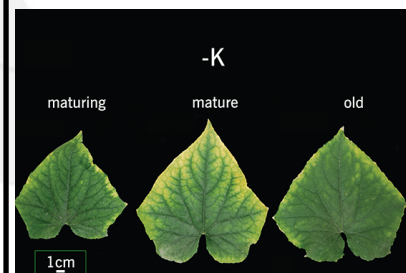
Lettuce



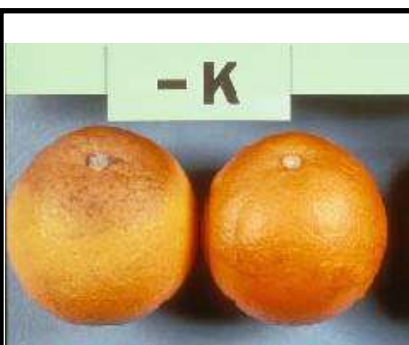
Strawberry



Tomato



Cucumber



Citrus



Wheat



Composition :-

Nitrogen Total	Nitrogen Nitrite	Nitrogen Urea	Phosphor Total	Phosphor MKP (Mono Potassium Phosphate)	Phosphor Urea Phosphate	Potassium Total	Potassium Potassium Nitrate	Potassium Potassium Sulphate	Potassium MKP (Mono Potassium Phosphate)	PH
N	NO ₂	NH ₂	P ₂ O ₅	KH ₂ PO ₄	CO(NH ₂) ₂ .H ₃ PO ₄	K ₂ O	KNO ₃	K ₂ SO ₄	KH ₂ PO ₄	PH
10	6.7	3.3	10	7.8	2.2	40	23.8	11	5.2	5 - 6

How to use and Dosage :-

Crop	Dosage
Outdoor Cultivations	0.75 - 138 g / plant / day
Green Houses	1.5 - 3.2 Kg / 500 m ² / Treatment
Foliar Spraying	2.1 - 3 Kg / Hectare / 1000 L
Fruit Trees	100 g / Tree / Week (1 - 5 Kg / Season)
Pivot Irrigation	5.5 - 7.5 Kg / Hectare / Treatment
Lawn Foliar Fertilization	2 - 2.5 Kg / Hectare / Treatment
The dosage depending on the soil analysis and the soil nutrition	

Usage Recommendations:-

- Keep out of direct sunlight.
- Store in dry and cool conditions, and the storage does not exceed 5 compact bags.
- Avoid contact with hands and eyes.
- The bags must be tightly closed
- It is recommended to use masks and gloves when handling the product

Packing:-

Purti Gala 10-10-40+TE is available in 25 kg bags