

# Ortiva Top

32.5 SC

**Double effectiveness  
for more comprehensive and longer protection**



## Active ingredient :-

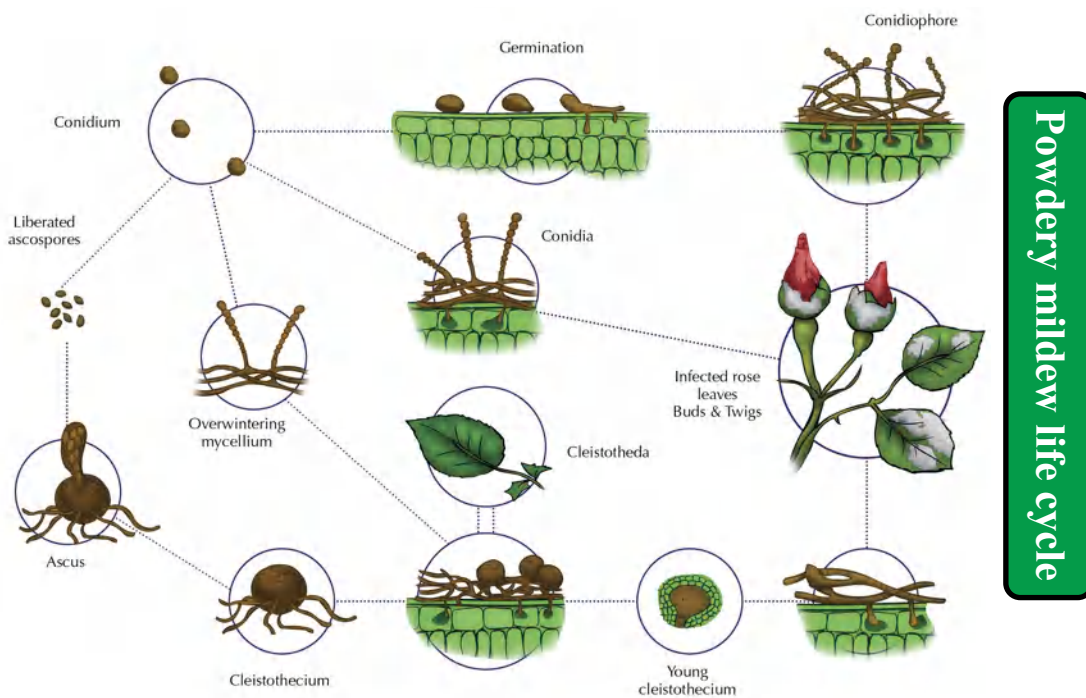
( Azoxystrobin 20% SC )  
( Difenoconazole 12.5% SC )

## Introduction :-

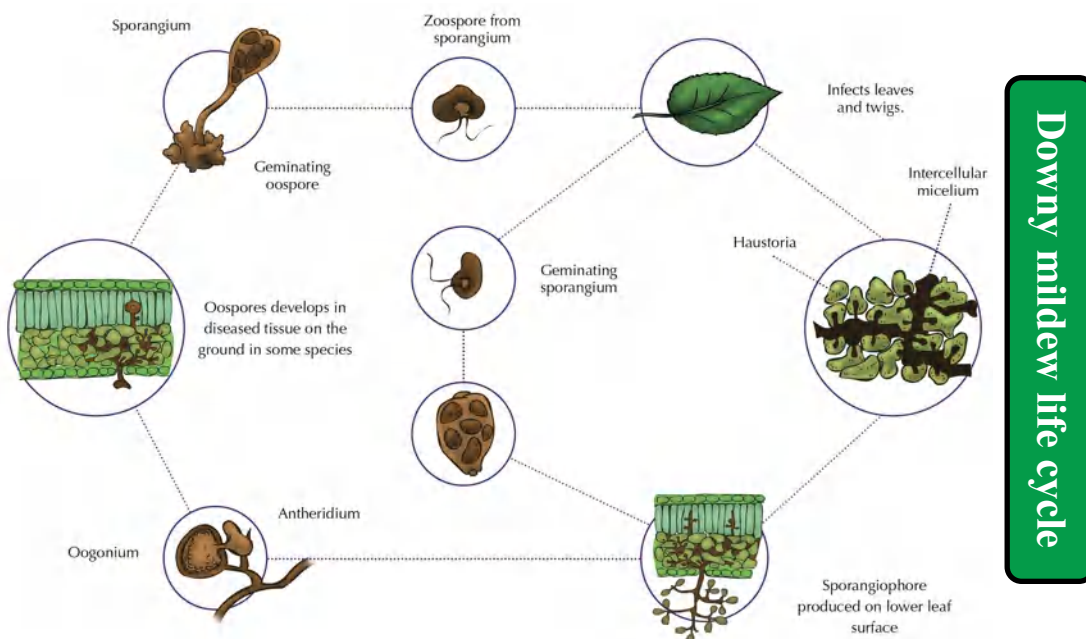
The pesticide is composed of two active substances, each substance differs from the other in its method of action, which leads to combating a wide range of diseases, improving the effectiveness of the pesticide, and preventing the occurrence of immunity, as it is used to combat powdery mildew, downy mildew, and early blight

**Advantages of using Ortiva Top :**

- 1) **The Ortiva Top pesticide is characterized by contact prevention. Once the pesticide sticks to the surface of the leaf, it works to stop the disease before it affects the plant.**
- 2) **The property of systemic prevention, as soon as the fungus implants its stalks to absorb the plant sap, the pesticide is spread through this sap, which gives protection to the treated leaves**



**Powdery mildew life cycle**

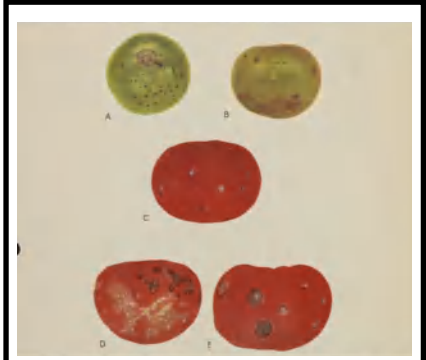


**Downy mildew life cycle**

# Examples of diseases in different crops



**Late blight on tomato**



**Nail Head spot in tomato**



**Downy mildew**



**Onion powdery mildew**



**Onion Alternaria porri**



**Mango powdery mildew**



**Pepper Anthracnose**



**Tomato Anthracnose**

**The group of diseases that Ortiva Top control :-**

<b>Downy mildew</b>	<b>Powdery mildew;</b>
<b>Onion Alternaria porri</b>	<b>Pythium wilt</b>
<b>Nail Head spot in tomato</b>	<b>Potato early blight</b>
<b>Septoria leaf spot</b>	<b>Cercospora Spot</b>
<b>Anthracnose</b>	<b>Gumm stem blight</b>

**Doses and usage :-**

المحصول	المرض	معدل الاستخدام	فترة الامان
<b>Tomato / Potato</b>	<b>Alternaria Solani</b>	<b>500 - 750 ml / ha</b>	<b>7 day</b>
	<b>Septoria lycopersici</b>		
<b>Cucumber / melon / Water-melon</b>	<b>Pseudoperonospora spp</b>		
	<b>Sphaerotheca fuliginea</b>		
	<b>Erysiphe Cichoracearum</b>		
<b>Grapes</b>	<b>Plasmopara Viticola</b>		
	<b>Uncinula necator</b>		

**Packing :-**

**Ortiva Top is available in 1 Liter .**