

Tamifume-Pro

690 g/l SL

Comprehensive sterilization of all soil problems



Active ingredient :-

Metam Potassium 690 g/l SL

Introduction :-

When Tamifume-Pro is injected and it comes into contact with soil saturated with water, it disintegrates into a gaseous form that spreads in the soil. The gas has a lethal and inhibitory effect on most fungi, bacteria, nematodes and weed seeds found in the soil.

The amount of water used:

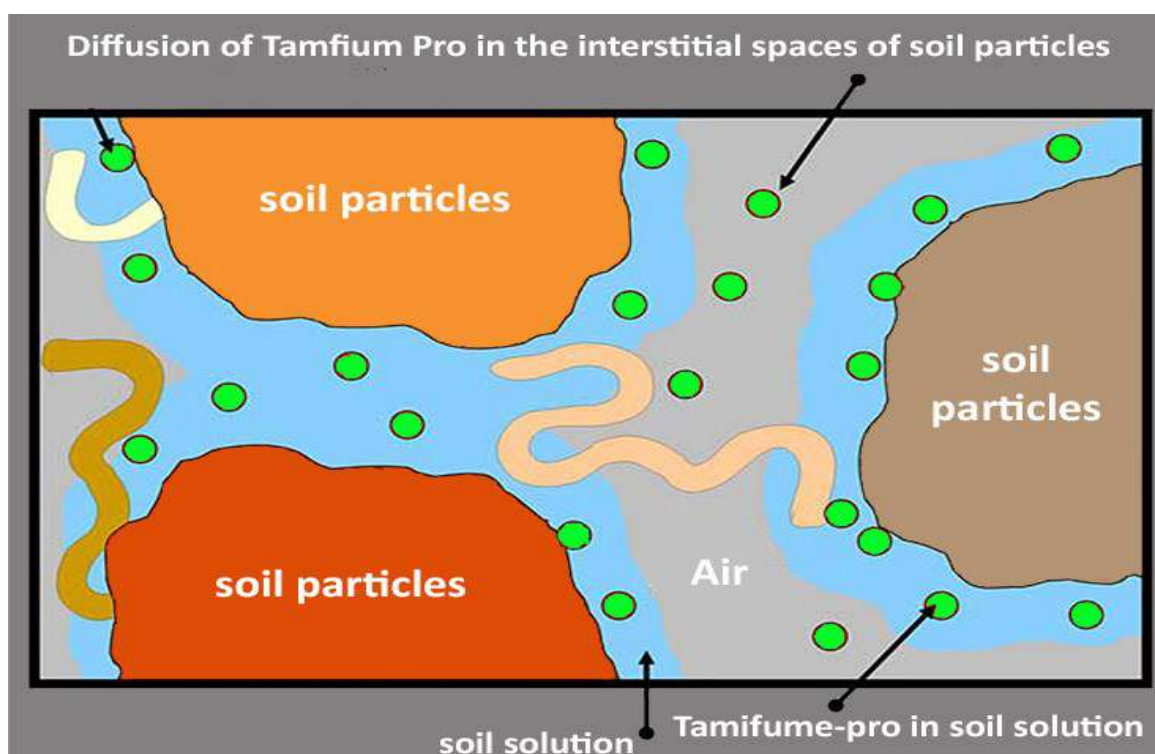


- Tamifume-Pro is injected with the irrigation water for 60 minutes when using droppers of 4 liters / hour .
- It is taken into account that the land is not irrigated before injection or immediately after injection, because irrigation immediately before injection will lead to saturation of the soil with water and will not allow potassium metabolite to penetrate into the ground. Irrigation immediately after injection will lead to washing out the sterilization material .

Post-injection treatments:

- 1) The soil is irrigated again after 2-3 days for 15 minutes, in order to keep Tamifume-Pro fumes in the soil as long as possible. In order to keep the surface layer closed with pores and keep the gas below it, and the continuation of irrigation after injection aims to further disseminate the material in the soil.
- 2) The gas volatilizes after a few days, about 8-11 days, which is one of the features of Tamifume-Pro . As it does not need the same time as thermal sterilization, after which the plastic is removed and the ground is left for ventilation for 3 days, thus the sterilization process takes between 11-14 days only.
- 3) The covering plastic is then exposed for ventilation.
- 4) Care must be taken not to re-contaminate the sterilized land with external soil or agricultural operations such as plowing.

Permeation and dispersal of Tamifium-PRO in soil solution and between its particles

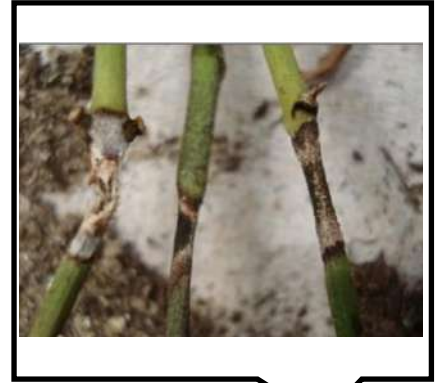




Fusarium in tomato



Rhizoctonia in tomato



Pythium in tomato



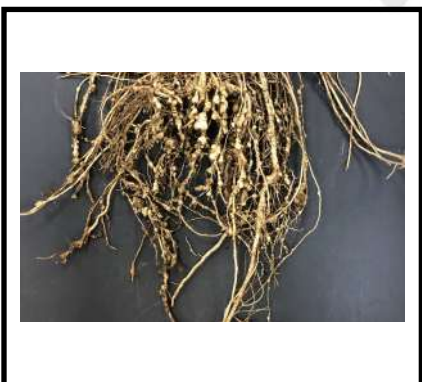
Fusarium in pepper



Rhizoctonia in pepper



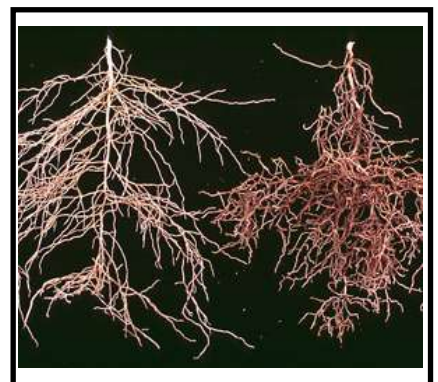
Verticillium in pepper



Root knot nematodes



Canker nematode



Citrus nematodes



Tamifume-Pro features :-

- 1) The highest concentration of the active substance and thus the lowest cost per unit area.
- 2) It is recommended in saline soils where there is no accumulation of sodium Na by repeating the treatment.
- 3) More stable in alkaline soils with a high acidity number or containing calcium carbonate.
- 4) Elimination of soil diseases such as fungi, bacteria, weed seeds and nematodes.
- 5) Each treatment at a dose of 900 L/ha adds 8.170 kg/ha of potassium K₂O.

Usage and Dosage :-

Nematodes	Fugus	Weeds	Dose
Root-knot nematodes	Fusarium	Annua ls, perenn ials and herbac eous	900L/ha/60 minute/25 cm depth 1100L/ha/60 minute/40-50 cm depth
Citrus nematode	Pythium		
Vesicular nematodes	Rhizoctonia		
Canker nematode	Sclerotinia		
Spiral nematodes	Photophore		
The other types...	Verticillium		

Packing :-

Tamifume-pro is available in a 25 liter gallon .